

# IP816A-LPC

## LPC Solution Network Camera



2MP · P-iris · WDR Pro · SNV · 3DNR · Remote Back Focus · EIS · 60 fps · Snapshot Focus · Corridor View · License Plate Capture

VIVOTEK's IP816A-LPC (Parking) and IP816A-LPC (Street) are a series of professional box network cameras offering perfect solutions for License Plate Capture with a unique headlight filter design and specialized firmware for traffic monitoring.

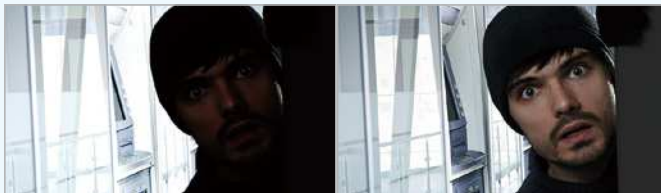
Featuring dedicated LPC firmware and mutually compatible lens options, the IP816A-LPC (Parking) and the IP816A-LPC (Street) are perfect for parking related and street based applications respectively. With a suitable selection of external IR LEDs, both cameras will be ideal for 24/7 license plate capture and will provide high-detail polished images for reliable license plate recognition.

Equipped with a P-iris lens for extreme precision images, a headlight filter design which blocks distracting lights, and Full HD sensor enabling viewing resolution of 1920x1080 at a smooth 30 fps, the IP816A-LPC (Parking) and the IP816A-LPC (Street) are capable of capturing high quality and high resolution video in any conditions. With up to 2 Megapixel with WDR Pro, 3DNR and SNV technology, no matter whether in high contrast or in low light environments, these cameras are high-tech workhorses which will ensure license plate capture and traffic monitoring of the highest precision.

In order to help properly adjust the focus of these high resolution cameras, the IP816A-LPC (Parking) and the IP816A-LPC (Street) are equipped with VIVOTEK's RBF (Remote Back Focus) System, allowing installers to adjust focus even more accurately in complicated or sensitive installation environments. Meanwhile, value-added features like EIS and Snapshot Focus ensure that the IP816A-LPC (Parking) and the IP816A-LPC (Street) perform as the perfect LPR solutions by empowering installers to adjust camera positions and focus with extreme precision.

### Key Features

- 2-Megapixel CMOS Sensor
- 30 fps @ 1920x1080
- 60 fps @ 1920x1080 (one-stream mode only)
- P-iris Lens
- Headlight Filter to Block Visible Light
- 3D Noise Reduction for Low-light Conditions
- WDR Pro (100 dB) to Provide Extreme Visibility in High Light Contrast Scenes
- SNV (Supreme Night Visibility)
- RBF System to Assist for Precise Focus Adjustment
- EIS (Electronic Image Stabilization) to Control Image Stability
- Two-way Audio
- Snapshot Focus
- Video Rotation for Corridor View
- Lens Profile for Lens Selection
- Snapshot Focus



Without WDR Pro

With WDR Pro



Train Station



Traffic Monitoring



Ordinary Camera

With SNV Camera



Tunnel Monitoring



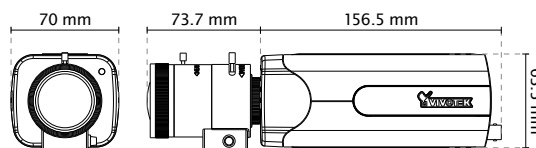
Parking Lot

## Technical Specifications

Model	IP816A-LPC (Parking) IP816A-LPC (Street)
<b>System Information</b>	
CPU	Multimedia SoC (System-on-Chip)
Flash	256MB
RAM	384MB
<b>Camera Features</b>	
Image Sensor	1/1.9" Progressive CMOS
Maximum Resolution	1920x1080 (2MP)
Lens Type	Vari-focal
Focal Length	IP816A-LPC (Parking): f = 4 ~ 18 mm IP816A-LPC (Street): f = 12 ~ 40 mm
Aperture	IP816A-LPC (Parking): F1.4 ~ F13 IP816A-LPC (Street): F2.36 ~ F2.44
Auto-iris	P-iris (DC-iris reserved)
Field of View	IP816A-LPC (Parking): 29° ~ 106° (Horizontal) 16° ~ 60° (Vertical) 33° ~ 130° (Diagonal) IP816A-LPC (Street): 10.2° ~ 30° (Horizontal) 8° ~ 22° (Vertical) 12° ~ 38° (Diagonal)
Shutter Time	IP816A-LPC (Parking): 1/400 to 1/10,000 sec. IP816A-LPC (Street): 1/800 to 1/10,000 sec.
Max. Shutter Time	1/5 to 1/10,000 sec.
WDR Technology	WDR Pro
Day/Night	Removable IR-cut filter for day & night function
Minimum Illumination	Illumination Threshold: 300 Lux @ IR On 600 Lux @ IR Off
Pan/tilt/zoom Functionalities	ePTZ: 48x digital zoom (4x on IE plug-in, 12x built in)
On-board Storage	SD/SDHC/SDXC card slot
<b>Video</b>	
Compression	H.264 & MJPEG
Maximum Frame Rate	30 fps @ 1920 x1080 60 fps @ 1920 x1080 (In one-stream mode only) (In both compression mode)
Maximum Streams	2 simultaneous streams
S/N Ratio	50.8 dB
Dynamic Range	Up to 100 dB
Video Streaming	Adjustable resolution, quality and bitrate
Image Settings	Time stamp, text overlay, flip & mirror; Configurable brightness, contrast, saturation, sharpness, white balance, exposure control, gain, backlight compensation, privacy masks, scheduled profile settings; 3D noise reduction, EIS, video rotation, snapshot focus
<b>Audio</b>	
Audio Capability	Two-way Audio (full duplex)
Compression	AAC, G.711, G.726
Interface	External microphone input Audio output
<b>Network</b>	
Users	Live viewing for up to 10 clients
Protocols	IPv4, IPv6, TCP/IP, HTTP, HTTPS, UPnP, RTSP/RTP/RTCP, IGMP, SMTP, FTP, DHCP, NTP, DNS, DDNS, PPPoE, CoS, QoS, SNMP, 802.1X, UDP, ICMP, ARP, SSL, TLS
Interface	10 Base-T/100 Base-TX Ethernet (RJ-45) *It is highly recommended to use standard CAT5e & CAT6 cables which are compliant with the 3P/ETL standard.

ONVIF	Supported, specification available at <a href="http://www.onvif.org">www.onvif.org</a>
<b>Intelligent Video</b>	
Video Motion Detection	Triple-window video motion detection
<b>Alarm and Event</b>	
Alarm Triggers	Video motion detection, manual trigger, digital input, periodical trigger, system boot, recording notification, camera tampering detection, audio detection
Alarm Events	Event notification using digital output, HTTP, SMTP, FTP and NAS server, SD Card File upload via HTTP, SMTP, FTP, NAS server and SD card
<b>General</b>	
Smart Focus System	RBF (Remote Back Focus)
Connectors	RJ-45 for Network/PoE connection Audio input/output BNC Video output AC 24V power input DC 12V power input Digital input*3 Digital output*1 RS485
LED Indicator	System power and status indicator
Power Input	DC 12V/AC 24V IEEE 802.3af PoE
Power Consumption	Max. 9.2 W (DC 12V) Max. 15.4 W (AC 24V) Max. 12.2 W (PoE)
Dimensions	230.2 (D) x 70 (W) x 63.5 (H) mm
Weight	632 g
Safety Certifications	CE, LVD, FCC Class B, VCCI, C-Tick, UL
Operating Temperature	Starting Temperature: 0°C ~ 60°C (32°F ~ 122°F) Working Temperature: -10°C ~ 60°C (14°F ~ 122°F)
Warranty	36 months
<b>System Requirements</b>	
Operating System	Microsoft Windows 8/7/Vista/XP/2000
Web Browser	Mozilla Firefox 7-10 (streaming only) Internet Explorer 7/8/9/10/11
Other Players	VLC: 1.1.11 or above Quicktime: 7 or above
<b>Included Accessories</b>	
CD	User's manual, quick installation guide, Installation Wizard 2, ST7501 32-channel recording software
Others	Quick installation guide, warranty card, lens, camera stand, screw pack

## Dimensions



## Compatible Accessories

### Enclosures



**AE-236 (Coming Soon)**  
Camera Enclosure with Heater (AC 24V)



**AE-237**  
Camera Enclosure (AC 24V)



**AE-241**  
IR UPoE Camera Enclosure



**AE-242**  
IR UPoE Camera Enclosure with Heater

### Lens



**AL-244**  
4 ~ 18mm,  
F1.4, P-iris



**AL-245**  
12 ~ 40mm,  
F1.8, P-iris

### IR Illuminators



**AI-104-010/025/035**  
-40 ~ 50°C, 24W IR LED, distance 100M/50M/25M,  
IP66, IK10 (12~24VDC or 24VAC in)

All specifications are subject to change without notice. Copyright © VIVOTEK INC. All rights reserved.

Ver. 3